



CARPENTARIA SHIRE

Outback by the Sea[®]

**CAPABILITY STATEMENT
ROADWORKS**

Table of Contents

1.0	Introduction	3
2.0	Executive Summary	4
3.0	Core Capabilities – Works Department	5
	Design.....	5
	Maintenance/Earthworks	5
	Drainage, Concrete and Culvert Structures	5
	Road Construction/Restoration	5
	General Works Services incl. Workshop	5
	Camps.....	5
4.0	Health and Safety	6
	Training and Development.....	6
5.0	Cultural, Environment and Quality	7
	Cultural.....	7
	Environmental.....	7
	Quality Systems.....	7
6.0	Pre-Qualification and Federal Certification	7
7.0	Project Management Structure - Works.....	8
8.0	Capabilities and Resources	9
9.0	Workforce Capabilities.....	10
	Labour Hire Workforce	10
	Subcontractors	10
10.0	Resource Capabilities	11
	Resources	11
11.0	Key Projects.....	12
	TIDS - Normanton to Burketown Road	13
	REPA and Betterment - Burke Developmental Road (89B)	14
	TMR Culvert Replacements.....	15
	Pavement Reconstruction and Sealing - Gulf Development Road (92A)	16
	Restoration of Essential Public Assets	17
	Betterment Project 2019-2020 – Normanton Barge Ramp	18
	Scrutton River Crossing	20
	NPS Guidelines – Completed Projects	22

1.0 Introduction

Carpentaria Shire Council is a local government located in the Southern part of the Gulf of Carpentaria in Remote North West Queensland. We cover an area of 64,381 kilometres² and road building is one of our main core activities.

We have a road network consisting of 1,662.19 kms of local roads (sealed – 107.67 kms and unsealed – 1,554.52 kms) and undertake maintenance on behalf of the Department of Transport and Main Roads of a further 574.52 kms of the State Road network within the Shire (273.02 kms unsealed).

Our key values which govern our behaviours as a Council are Strong leadership, respect and teamwork, good governance, pride in our work, positive and professional, informed decision making and realistic goals.

Mark Crawley
Chief Executive Officer



2.0 Executive Summary

Since our early beginnings in 1889 as the Carpentaria Divisional Board and then subsequently in 1903 as the constituted Carpentaria Shire Council we have always had responsibility for roads. Whether for simply maintaining them or constructing new roads the Carpentaria Shire Council would say it has some experience in road building/maintenance.

We have developed and continue to refine our capacity to deliver value for money solutions when it comes to roads and have for many years now been very proud of our achievements. We live in an area that is constantly impacted by weather events and often most of our road network is damaged to some degree from these events. In recent years it appears that we have an event every year and we are back out to undertake emergent work to make the roads trafficable before the works are completed from the previous event.

Council has a commitment to increase its professionalism in line with its core values and is taking this approach to its delivery of services within the road construction and maintenance area of the engineering services department.

Whether it is providing maintenance and construction services for the Department of Transport and Main Roads or reconstruction/restoration efforts for the Queensland Reconstruction Authority our approach is similar, we aim to provide a quality product for a fair price ensuring Value for Money every time.

During the 2020-2021 financial year Carpentaria Shire Council will complete sealing of 50kms of the road network within the Council area. This includes work on behalf of the State Government and our own local roads through TIDS funding and Roads to Recovery (R2R).

Council's capability and capacity to undertake and deliver a quality roadworks product is part of what we pride ourselves on and is testament to our core values. We provide this Capability Statement to back up our commitment to delivering quality products to road users, ratepayers and our funding partners.

3.0 Core Capabilities – Works Department

Council's Works Department within the Engineering Services section of Council has the experience and core capabilities to deliver a value for money solution for all types of road and drainage structures required within the Shire. Whether its work on our own network or projects for third parties like Queensland Reconstruction Authority or Transport and Main Roads our philosophy is the same. We aim to deliver a quality product for a fair price. It is what our road users come to expect from their Council.

Design

Council has access to resources to provide designs for the works proposed.

Maintenance/Earthworks

By allocating enough financial resources in its annual budget Council can provide a level of maintenance to ensure a trafficable surface is available to support the road users to facilitate transport of goods, services and livestock from the Shire.

Council has also implemented an intervention level response to maintenance requests and a regular inspection program to ensure that problem areas are addressed in a timely manner both for safety and for movement across the road network.

Drainage, Concrete and Culvert Structures

Council has successfully undertaken both small- and large-scale concrete and drainage works within the Shire. These projects vary from minor repairs to headwalls and replacing damaged RCP sections to major culvert upgrades.

Road Construction/Restoration

Council has a history of undertaking and completing projects for itself, the State Government and restoring public assets following natural disaster events. With the recent introduction of the Stabiliser into the fleet our capability has increased, and delivery of stabilised pavements is more efficient and cost effective.

General Works Services incl. Workshop

Council is committed to ensuring its fleet is well maintained and regularly serviced to ensure reliability. To that end we have a well-equipped workshop with technically qualified staff to undertake the necessary works to ensure that reliability of plant and equipment is achieved.

Camps

Council has enough facilities to establish up to six camps across the Shire where and when required, our staff have no issue with camping away from the main centre and usually work a 10 days on / 4 days off roster. Camp facilities, as well as bedding, includes all cooking, utilities and provision of WiFi for entertainment and connectivity to family back home.

4.0 Health and Safety

Carpentaria Shire Council is committed to promoting and improving standards of Workplace Health and Safety (WHS) to ensure a safe and healthy working environment for all our workers (including contractors), customers/clients and the public in general.

We constantly address our responsibilities and duty of care under the Work Health and Safety Act and Regulation 2011. The development, implementation and application of our Safety Management System focuses on ensuring a high level of WHS.

It is the primary goal of Council to eliminate or reduce risk by developing proactive strategies and adopting a Risk Management approach to WHS. We understand that creating and maintaining a safe and healthy working environment is critical to providing an injury and illness free workplace. Council is committed to minimising lost time injuries and providing suitable duties programs where possible, to support the return to work rehabilitation of employees affected by workplace injuries.

We consider that the success of our health and safety management will depend on our ongoing commitment and diligence, combined with a joint effort between management and workers, with everybody having responsibilities in assisting to achieve our goals.

Council achieved a 70% score in its WH&S Management System Audit and was awarded a SafePlan Bronze WH&S Award in 2017.

Regular toolbox talks and the development and utilisation of JSA's and SWMS are in constant use for the works department to ensure the monitoring and consideration of risks is undertaken for the safety of our workforce, visitors and the general public. Our employees and their families should be ensured that staff will return home safely after their days work for Council.



Council holds ISO 45001:2018 Certification from 4 March 2021

Training and Development

Council is committed to providing upskilling and training to all its employees. We have a regular program available for staff which includes a mixture of mandatory and elective training for staff. Council has a regular intake of apprentices and trainees to provide opportunities for young local members of the community.

In 2006 Council was a category winner in the Strengthening Indigenous Communities category of the National Awards for Local Government for its Normanton Youth Rural Training and won this category again in 2009. In 2007 Council was acknowledged as the employer of the Certificate II Trainee of the Year in Civil Construction. We pride ourselves on developing local talent within our workforce and while it isn't about always winning awards, we have been very successful in creating longer term employment for our locals through the traineeships and apprenticeships available at Council.

5.0 Cultural, Environment and Quality

Cultural

The Gkuthaarn, Kukatj and the Kurtijar peoples are the traditional owner groups of the lands within the Carpentaria Shire and Council wishes to acknowledge the traditional custodians of the land on which we work and live and pay respects to Elder's past, present and emerging.

Council has a high percentage of Aboriginal workers within the Shire workforce

We have a close working relationship with the Traditional Owner Groups and often utilise the services of Cultural Monitors to assist with works conducted within the Shire.

Environmental

Council is in the process of acquiring third party accreditation to ISO 14001 standard.

Council engages with stakeholders as and where required depending on the works proposed to be undertaken and delivered.

Council holds ISO 14001:2015 Certification issued on 4 March 2021



Quality Systems

Council has implemented quality management systems within the organisation to ensure quality control is part of our day-to-day activity in delivering service.

Council holds ISO 9001:2015 Certification issued on 4 March 2021



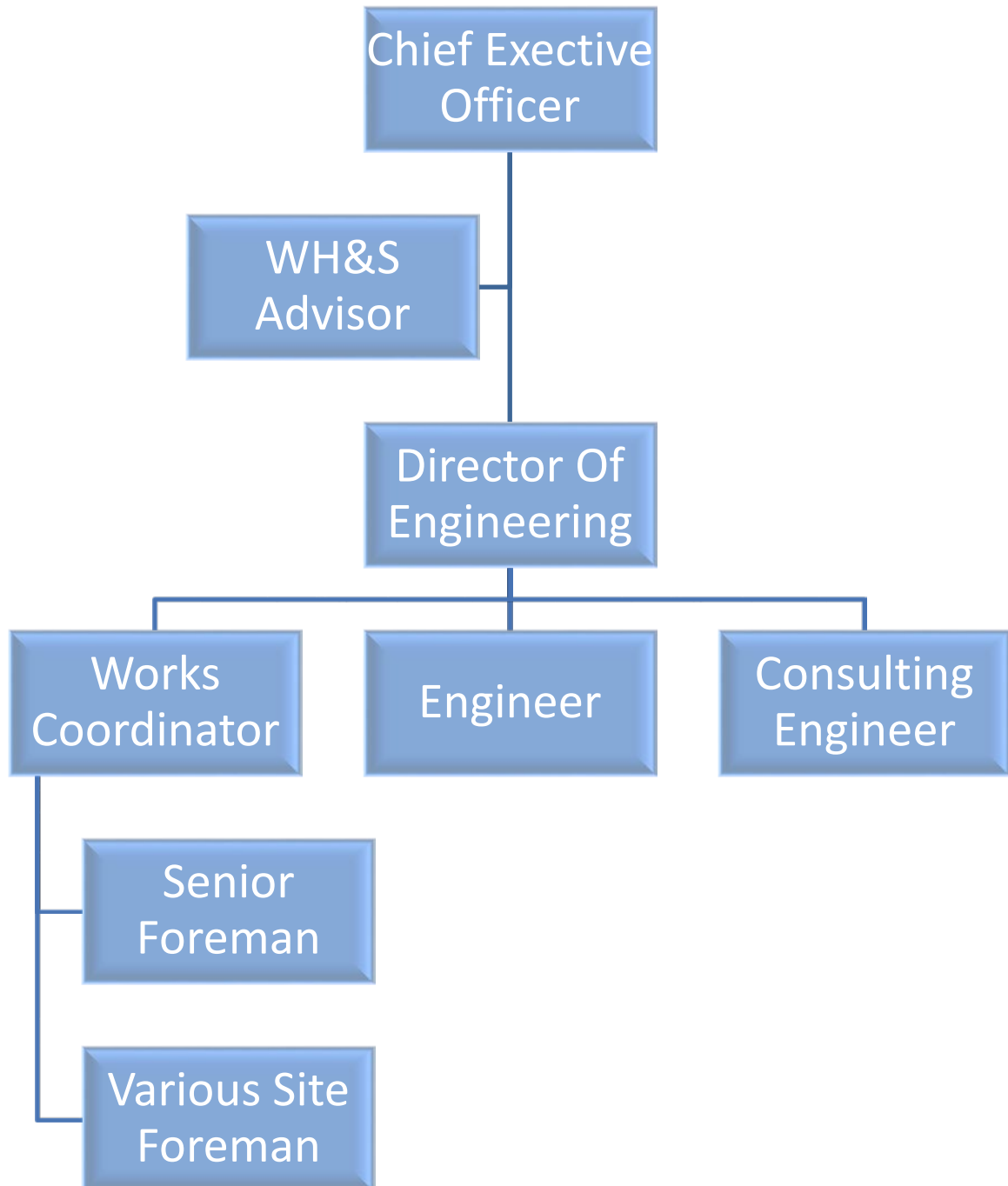
6.0 Pre-Qualification and Federal Certification

Following receiving the certification issued for Workplace Health & Safety Management Systems, Environmental Management Systems and Quality Management Systems Council was able to submit an application to Main Roads for Pre-qualification for R2 (Roads) and B1 (Bridges) works.

Council received prequalification on 31 March 2021 and then progressed to obtain Federal Safety Certification and was advised on 13 August 2021.



7.0 Project Management Structure - Works



8.0 Capabilities and Resources

It is of paramount importance for the Carpentaria Shire Council to have the staff, systems, resources and capability available to provide a safe and reliable road network for the ratepayers, residents and visitors to our Shire. We are confident that our people and available subcontractors have the skills and competencies to deliver the quality services that people have come to rely upon in the Gulf.

A list of some of the skills and certifications held by Carpentaria Shire Council staff include: -

- Cultural Heritage Duty of Care
- Apply Risk Management Processes
- Bachelor of Engineering (Civil)
- Certificate II and III in Civil Construction (Road Construction & Maintenance)
- Certificate III in Civil Construction (Plant Operations)
- Certificate III in Engineering – Mechanical Trade (Maintenance)
- Certificate III in Mentoring (Wirdanyiny)
- Certificate IV in Civil Construction Supervision
- Certificate IV in Frontline Management
- Certificate IV in Local Government (Operational Works)
- Certificate IV in Training and Assessment
- Certificate IV in Leadership and Management
- Certificate IV in Workplace Health & Safety
- Chainsaw Trim and Cross Cut Fell Trees
- Conduct Backhoe/ Loader Operations (LB)
- Conduct Civil Construction Water Cart Operations
- Conduct Crane Operations (CV), (CT), (CP), (CB), (CN), (LBG)
- Conduct Dozer Operations (LZ)
- Conduct Excavator Operations (LE)
- Conduct Front End Loader Operations (LL)
- Conduct Grader Operations (LG)
- Conduct Haul Truck R&A Operations (HT)
- Conduct Hydraulic Excavator Operations
- Conduct Roller Operations (LR)
- Conduct Scraper Operations (LP)
- Conduct Skid Steer Operations (LS)
- Conduct Stabilizer Operations
- Confined Spaces (Including Operate Breathing Gear)
- Fatigue Management Drivers and Schedulers
- Traffic Management Implementation

9.0 Workforce Capabilities

Council has the right sized workforce to be able to deliver the services required of a remote local government in Queensland. We have systems in place to train and upskill where and when necessary and are improving the computer system to allow for management decision making based on quality reliable information.

Some of the workforce positions currently in the Works Department include: -

- Director of Engineering
- Engineer
- Works Supervisor
- Senior Foreman
- Foreman
- WH&S Senior Advisor
- WH&S Advisor
- Works Program Manager – (Assets)
- Workshop Foreman
- Operators
- Labourers

Council is conscience of not “ramping up” recruitment to suit the ebb and flow work schedules when funding becomes available and then not having enough works to maintain an increased workforce in the longer term. In these instances, the Council has access to a reliable Labour Hire workforce and local subcontractors.

Labour Hire Workforce

Based in Normanton, Gulf Labour Hire is a recently established labour hire company employing local staff and has access to other staff from across the Gulf and towards the coast in Cairns. Being local they are in a position to provide labour services to Council in a timely manner and have developed a close working relationship with Council to ensure their employees are versed in the Council Workforce Policies and Procedures.

Subcontractors

As required, Carpentaria Shire Council utilises the services of many local subcontractors who are located locally in Normanton and Karumba. Council continues to work with its local suppliers to ensure that their capacity and capability is of a high standard. Each year we call expressions of interest for pre-qualified suppliers and we are constantly reviewing the standards to ensure the latest standards are included in a tender specification. From time to time we are also able to source subcontractors from just outside the Region who are also assessed against the same criteria and standards for the local subcontractors. We are also looking for Value for Money from the delivery of service from our subcontractors and assessment of productivity targets are built into the contracts.

10.0 Resource Capabilities

Council has a regular plant replacement program in place to ensure that plant is optimised and fit for purpose. Council has a well-resourced workshop to enable the repairs of machinery as required. Council ensures that its plant is well maintained and serviced regularly to

Resources

Graders		Caterpillar 150 x 1
		Caterpillar 140M x 3
Stabiliser		Wirtgen
Loaders		Caterpillar 966K, 950H, 432F2 (backhoe, loader), 226B Skid Steer Loader, 259D Compact Track Loader
Rollers		Caterpillar CW34 Multi tyred x 3, Caterpillar CS76XT Single drum x 2, Caterpillar CS78B Vibrating Drum x 4, Dynapac CC900 Twin Drum x 1
Water Trucks		11,000litre slip in water tanks
Low Loader		Drake Triaxle 29tonne capacity

Council also has a good relationship with Cat Rental – Hastings Deering, Tutt Bryant and Fleet Crew and always have several items of plant on hire and Council have access to other machines as work requires.

11.0 Key Projects

The following pages contain details of some of the projects undertaken by the Carpentaria Shire Council in recent years.

The following projects represent work undertaken and completed by the Carpentaria Shire works crews, some of this work is completed on the Shire road network while other projects are completed on behalf of the Department of Transport and Main Roads.

As mentioned previously the Carpentaria Shire are roadbuilders and road maintainers. We have an extensive road network, and a significant portion of the network is gravel and we are attempting to complete bitumen sections each year to provide a safer network for road users.

The projects below are a small sample of the works undertaken by Council and highlight the capacity and capability of the Council Works Crews to undertake and complete quality works.



Council has received its Certification Assistant Minister for Road Safety and Freight Transport Hon. Scott Buchholz MP with Mayor Jack Bawden and our Federal Government Certificate Accreditation Scheme

TIDS - Normanton to Burketown Road

Project Overview

The Normanton to Burketown Road is part of the nationally recognised Savannah Way across the tropical surrounds of northern Australia, linking Cairns in Queensland with Broome in Western Australia. This project involved full road construction of gravel top up where required and 200mm in-situ cement stabilised pavement layer and two coats of bitumen sealing.

Client

50/50 Partnership between Department Transport and Main Roads (DTMR) and Council

Location

Transport Infrastructure Development Scheme - 6km new bitumen works on the Normanton to Burketown Road

Cost

\$1.8 Million

Project Duration

2019-2020

Project features

Roadworks

- Multi-layer granular pavements
- In-situ cement stabilised granular pavement
- Bitumen seal



Project Utilisation of Prequalification Categories (NPS Guidelines)

R1 [A] Rural works including reconstruction and construction

R1 [C] Simple granular pavements with sprayed seal surfacing

R1 [E] Roadside furniture

R1 [F] Non-complex worksite traffic management, typically AADT <100 vehicles/day

R2 [H] Identification and management of select nominated subcontractors

R1 [I] Non-complex project management

R1 [J] Low cultural heritage. Majority of work in previously disturbed ground within road footage

REPA and Betterment - Burke Developmental Road (89B)

Project Overview

At 1,079 kilometres long, the Burke Developmental Road (89B) makes the top 10 list of Australia's longest roads. It is an important strategic route for cattle movement servicing the entire Gulf Region and an important link providing access to the communities of Kowanyama and Pormpuraaw. This project involved full road construction of new subgrade profiles and treatments, followed by a 200mm new cement stabilised pavement layer and two coats of bitumen sealing. The works included concrete floodway margins.

Client

Department Transport and Main Roads (DTMR) - 15km new bitumen works

Location

Burke Development Road (89B)

Cost

\$5.9 million

Project Duration

2020

Project features

Roadworks

- Multi-layer granular pavements
- In-situ cement stabilised granular pavement
- Bitumen seal

Drainage Structures

- Concrete margins
- Rock protection



Project Utilisation of Prequalification Categories (NPS Guidelines)

R1 [A] Rural works including reconstruction and construction

R2 [C] Multi-layer granular pavements including cement stabilisation and sealing

R1 [E] Roadside furniture

R1 [F] Non-complex worksite traffic management, typically AADT <100 vehicles/day

R2 [H] Identification and management of select nominated subcontractors

R1 [I] Non-complex project management

R1 [J] Low cultural heritage. Majority of work in previously disturbed ground within road footage

TMR Culvert Replacements

Project Overview

Council replaced multi-cell culverts at five locations on the Karumba Development Road (84A) and an RCP culvert on the Burke Developmental Road (89A). The works included construction of side-tracks and monitoring of acid sulphate soils.

Client

Department Transport and Main Roads (DTMR)

Location

Various locations on Karumba Developmental Road (84A) and Burke Developmental Road (89B)

Cost

\$622 Thousand

Project Duration

2019

Project features

Roadworks

- Reconstruct sealed pavements

Drainage Structures

- Removal and installation of culverts in four locations
- Removal and installation of pipes in one location



Project Utilisation of Prequalification Categories (NPS Guidelines)

R1 [A] Minor works including simple reconstruction

R1 [B] Earthworks to a maximum of 2m in cut or fill

R2 [C] Simple A/C pavements

R2 [D] Medium-sized culvert works (RCBC <1.8m height and <6 bays)

R1 [E] Road furniture

R1 [F] Non-complex worksite traffic management, typically AADT <100 vehicle/day

R2 [H] Identification and management of select nominated subcontractors

R2 [I] Non-complex environmental risk management

R1 [J] Low cultural heritage. Majority of work in previously disturbed ground within road footage

Pavement Reconstruction and Sealing - Gulf Development Road (92A)

Project Overview

This project involved the reconstruction, stabilisation and sealing of multiple sections of pavement on the Gulf Developmental Road (92A).

Client

Department Transport and Main Roads (DTMR)

Location

Gulf Developmental Road (92A)

Cost

\$747 Thousand

Project Duration

2020

Project features

Roadworks

- Granular pavement course corrections
- In-situ cement stabilised granular pavement
- Bitumen sealing
- Line marking



Project Utilisation of Prequalification Categories (NPS Guidelines)

R1 [A] Rural works including reconstruction and construction

R2 [C] Significant longitudinal joints with existing pavements

R1 [E] Roadside furniture

R2 [F] Non-complex worksite traffic management, typically AADT <500 vehicles/day

R2 [H] Identification and management of select nominated subcontractors

R1 [I] Non-complex project management

R1 [J] Low cultural heritage. Majority of work in previously disturbed ground within road footage

Restoration of Essential Public Assets

Project Overview

Council is undertaking restoration and betterment works on all Shire Roads meeting QRA requirements. The works consists of gravel resheeting, formations grades, drainage and causeway rectification, and bitumen rehabilitation to restore essential infrastructure assets.

Client

Queensland Reconstruction Authority (QRA)

Location

2019 DRFA Shire REPA and Betterment Works – Multiple roads located throughout the Shire

Cost

\$68 Million

Project Duration

2019-2021

Project features

Roadworks

- 158km gravel resheeting
- 375km formation resheeting
- 241km heavy formation grading
- 15,000m² bitumen sealing

Drainage Structures

- Clearing of drainage structures
- Repair of damaged drainage structures
- Replacement of damaged road furniture

Project Utilisation of Prequalification Categories (NPS Guidelines)

R1 [A] Minor works including simple reconstruction

R2 [B] Excavation in rock not requiring blasting

R1 [C] Simple granular pavements with sprayed seal surfacing

R1 [D] Minor culvert work (RCP < 600mm diameter only no more than 2 bays)

R1 [E] Road furniture

R1 [F] Non-complex worksite traffic management, typically AADT <100 vehicle/day

R2 [H] Identification and management of select nominated subcontractors

R2 [I] Non-complex environmental risk management

R2 [J] Monitoring during clearing and grubbing. Cultural heritage assessment and artefacts collection during monitoring.

Betterment Project 2019-2020 – Normanton Barge Ramp

Project Overview

Due to the regular flooding which isolates Normanton and Karumba, the Australian Government provided funding to construct a barge ramp at the edge of the Normanton township. This will allow the Karumba barge to dock at Normanton for supply transfers to Karumba during major flooding events.

Client

Australian Government – Natural Disaster Resilience Program (NDRP)

Location

Landsborough Street, Normanton

Cost

\$550 Thousand

Project Duration

2020

Project features

Barge Ramp

- Concrete pavement and driveway
- Rock blasting
- Channel clearing
- Vehicle anti-slip grooves for length of ramp
- Security fencing and gates





Project Utilisation of Prequalification Categories (NPS Guidelines)

- R1 [A] Minor works including simple construction
- R3 [B] Excavation in hard rock where blasting is required
- R3 [C] Small scale concrete pavement
- R1 [E] Security fencing and gates
- R1 [F] Non-complex worksite traffic management
- R2 [H] Identification and management of select nominated subcontractors
- R1 [I] Non-complex project management
- R2 [J] Low level environmental management and low cultural heritage

Scrutton River Crossing

Project Overview

The Dunbar-Kowanyama Road is the only access to Kowanyama from larger commercial and service centres. The existing alignment at the Scrutton River crossing includes sharp radius horizontal curves with narrow pavement widths which, combined with sharp vertical crests do not allow road trains to pass. The works included raising of the existing floodway slab, widening of carriageway to accommodate two lanes, installation of multi-celled culverts with concrete protections, and sealed approaches.

Client

Department Transport and Main Roads (DTMR) – ATSI TIDS

Location

Scrutton River – Dunbar-Kowanyama Road

Cost

\$2 Million

Project Duration

2019

Project features

Roadworks

- Concrete causeway
- New pavement and seal
- Widening of carriageway

Drainage Structures

- Multi-celled culverts
- Fish passage baffles
- Concrete and rock protection



Project Utilisation of Prequalification Categories (NPS Guidelines)

R1 [A] Minor works including simple construction, reconstruction and widening

R2 [B] Significant earthwork including structural fill and rock protection

R3 [C] Small scale concrete pavement

R2 [D] Medium-sized culvert works (RCBC < 1.8m height and < 6 bays)

R1 [E] Roadside furniture

R1 [F] Non-complex worksite traffic management, typically AADT < 100 vehicles / day

R2 [H] Identification and management of select nominated subcontractors

R1 [I] Non-complex project management

R1 [J] Low level environmental management and low cultural heritage

NPS Guidelines – Completed Projects

Pre-qualifications for Carpentaria Shire Council – Roadworks

(Reference numbers shown against category descriptions correlate with Project Numbers)

Category	A General features of works	B Earthworks	C Pavement	D Drainage	E Miscellaneous	F Traffic Management	G Services	H Subcontractors / Consultants	I Stakeholder / Project Management	J Cultural Heritage & Environmental Management
R1	<ul style="list-style-type: none"> Often rural works with minimal traffic and staging issues Minor works including simple construction, reconstruction and widening 	<ul style="list-style-type: none"> Earthworks to a maximum of 2m in cut or fill 	<ul style="list-style-type: none"> Simple granular pavements with sprayed seal surfacing 	<ul style="list-style-type: none"> Minor culvert work (RCP < 600mm dia only no more than 2 bays) and reinforced concrete works 	<ul style="list-style-type: none"> Cattle grids Roadside furniture (e.g. signs, safety barriers) Security fencing and/or gates 	<ul style="list-style-type: none"> Non-complex worksite traffic management Typically AADT < 100 vehicles / day 	<ul style="list-style-type: none"> Nil 	<ul style="list-style-type: none"> Nil 	<ul style="list-style-type: none"> Non-complex project management 	<ul style="list-style-type: none"> Low level environmental management No to low cultural heritage Majority of work in previously disturbed ground with road footprint
R2	<ul style="list-style-type: none"> Low complexity at grade intersection and channelization works. Located at the rural to semi urban environment 	<ul style="list-style-type: none"> Significant earthwork including structural fill and rock protection Excavation in rock not requiring blasting Cut or fill with slopes up to 1:2 and up to 5m in height or 	<ul style="list-style-type: none"> Significant longitudinal joints with existing pavements Multi-layer granular pavements or A/C pavements 	<ul style="list-style-type: none"> Medium-sized culvert works (RCBC < 1.8m height and < 6 bays) Cross and longitudinal drainage Interface with bridge construction 	<ul style="list-style-type: none"> Lighting Minor works associated with traffic signals Pedestrian crossing or similar Simple traffic light modifications 	<ul style="list-style-type: none"> Non-complex to moderately complex worksite traffic Typically AADT < 500 vehicles / day 	<ul style="list-style-type: none"> Non-complex service relocation works 	<ul style="list-style-type: none"> Identification and management of select nominated subcontractors 	<ul style="list-style-type: none"> Non-complex environmental risk management 	<ul style="list-style-type: none"> Monitoring during clearing and grubbing Cultural heritage assessment and artefacts collection during monitoring Management of multiple native groups Dilapidation survey, dust monitoring,

Category	A General features of works	B Earthworks	C Pavement	D Drainage	E Miscellaneous	F Traffic Management	G Services	H Subcontractors / Consultants	I Stakeholder / Project Management	J Cultural Heritage & Environmental Management
		depth (cutting)								vibration monitoring
R3	<ul style="list-style-type: none"> • More complex intersections located at urban location • Medium to large scale of works 	<ul style="list-style-type: none"> • General earthworks exceeding 5m in cut or fill • Mechanically stabilised earth construction to a nominal 5m in height • Excavation in hard rock where blasting is required 	<ul style="list-style-type: none"> • Pavements construction using marginal materials (non-standard) • Pavement construction using modified materials (e.g. cement treated sub-base) • Deep lift asphalt • Small scale concrete pavement 	<ul style="list-style-type: none"> • Special foundation and/or subgrade and subsoil drainage treatments • Includes large size culverts, multiple bays and link slab culverts 	<ul style="list-style-type: none"> • Permanent traffic signals for moderate to heavily trafficked intersection 	<ul style="list-style-type: none"> • Moderately complex worksite traffic management • Typically AADT < 5000 vehicles / day • Multiple staging or simple traffic shift • Hard wired temporary traffic signals 	<ul style="list-style-type: none"> • Moderately complex service relocations including conduits (e.g. electrical, telecommunication services) 	<ul style="list-style-type: none"> • Non-complex design management • Moderately complex project management including subcontractor management and coordination 	<ul style="list-style-type: none"> • Moderately complex to complex community / stakeholder management • Moderately complex environmental risk management 	<ul style="list-style-type: none"> • Relocation of local flora and fauna • Installation of fauna fencing • Identification of culturally significant tree or sacred site

