

DRAFT - INTERNAL USE ONLY



CARPENTARIA SHIRE

Outback by the Sea®

Carpentaria Shire Council  
Planning Scheme

Strategic Framework Map  
Region

- Townships
- Airport
- Railway Station
- State controlled road
- Major roads
- Railway
- Use areas**
- Residential
- Commerical
- Industry
- Community facility
- Rural Residential
- Rural land
- Strategic port land
- MSES Protected areas (estates)
- MSES Protected areas (nature refuge)
- Local Government boundary
- Surrounding Local Government boundary
- Waterways

**DISCLAIMER**  
While every care is taken to ensure the accuracy of this map, Carpentaria Shire Council makes no representations or warranties about its accuracy, reliability, completeness or suitability for any particular purpose and disclaims all responsibility and liability (including without limitation, liability in negligence) for result of the data being inaccurate or incomplete in any way and for any reason.

Based on or contains data sourced from the State Government 2023 which gives no warranty in relation to the data (including accuracy, reliability, completeness or suitability) and accepts no liability (including without limitation, liability in negligence) for any loss, damage or costs (including consequential damage) relating to any use of the data.

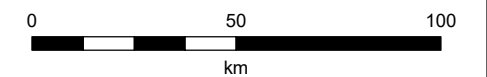
© Copyright Carpentaria Shire Council 2023

**DATA SOURCE**  
- State controlled roads as at 2/02/2021, sourced from QSpatial (State of Queensland)  
- Matters of State Environmental Significance (MSES) as at 21/09/2021, sourced from QSpatial (State of Queensland)  
- Strategic port land provided by Department of Main Roads and Transport, Feb 2022.

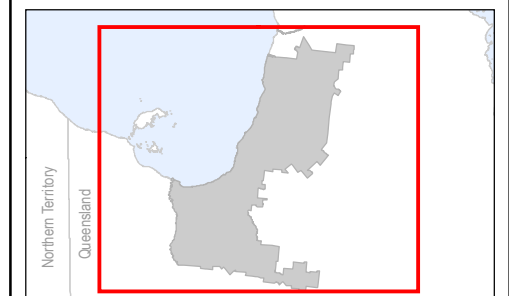
Geocentric Datum of Australia (GDA2020 Zone 54)  
Gazettel Data: 00/00/0000

20/01/2023

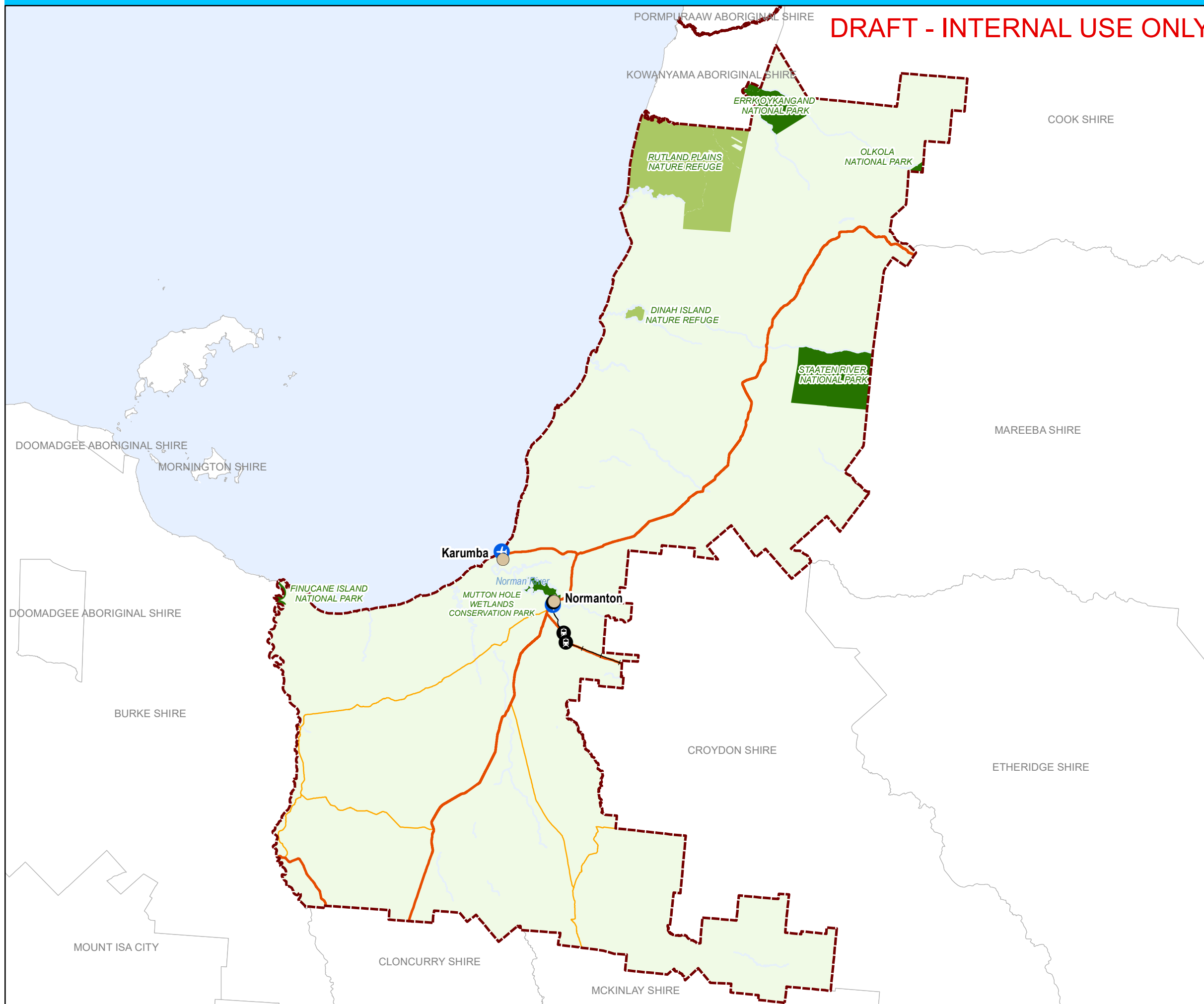
Approx Scale @ A3 1:1,850,000



Sheet Index



Strategic Framework Map SFM1.0



DRAFT - INTERNAL USE ONLY



CARPENTARIA SHIRE  
*Outback by the Sea®*

**Carpentaria Shire Council  
Planning Scheme**

**Strategic Framework Map  
Normanton and Surrounds**

- Townships
- Airport
- Railway Station
- State controlled road
- Major roads
- Railway
- Use areas**
- Residential
- Commerical
- Industry
- Community facility
- Rural Residential
- Rural land
- Strategic port land
- MSES Protected areas (estates)
- MSES Protected areas (nature refuge)
- Local Government boundary
- Waterways

**DISCLAIMER**  
While every care is taken to ensure the accuracy of this map, Carpentaria Shire Council makes no representations or warranties about its accuracy, reliability, completeness or suitability for any particular purpose and disclaims all responsibility and liability (including without limitation, liability in negligence) for result of the data being inaccurate or incomplete in any way and for any reason.

Based on or contains data sourced from the State Government 2023 which gives no warranty in relation to the data (including accuracy, reliability, completeness or suitability) and accepts no liability (including without limitation, liability in negligence) for any loss, damage or costs (including consequential damage) relating to any use of the data.

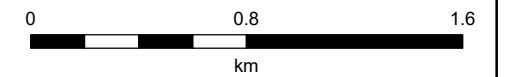
© Copyright Carpentaria Shire Council 2023

**DATA SOURCE**  
- State controlled roads as at 2/02/2021, sourced from QSpatial (State of Queensland)  
- Matters of State Environmental Significance (MSES) as at 21/09/2021, sourced from QSpatial (State of Queensland)  
- Strategic port land provided by Department of Main Roads and Transport, Feb 2022.

Geocentric Datum of Australia (GDA2020 Zone 54)  
Gazettel Data: 00/00/0000

20/01/2023

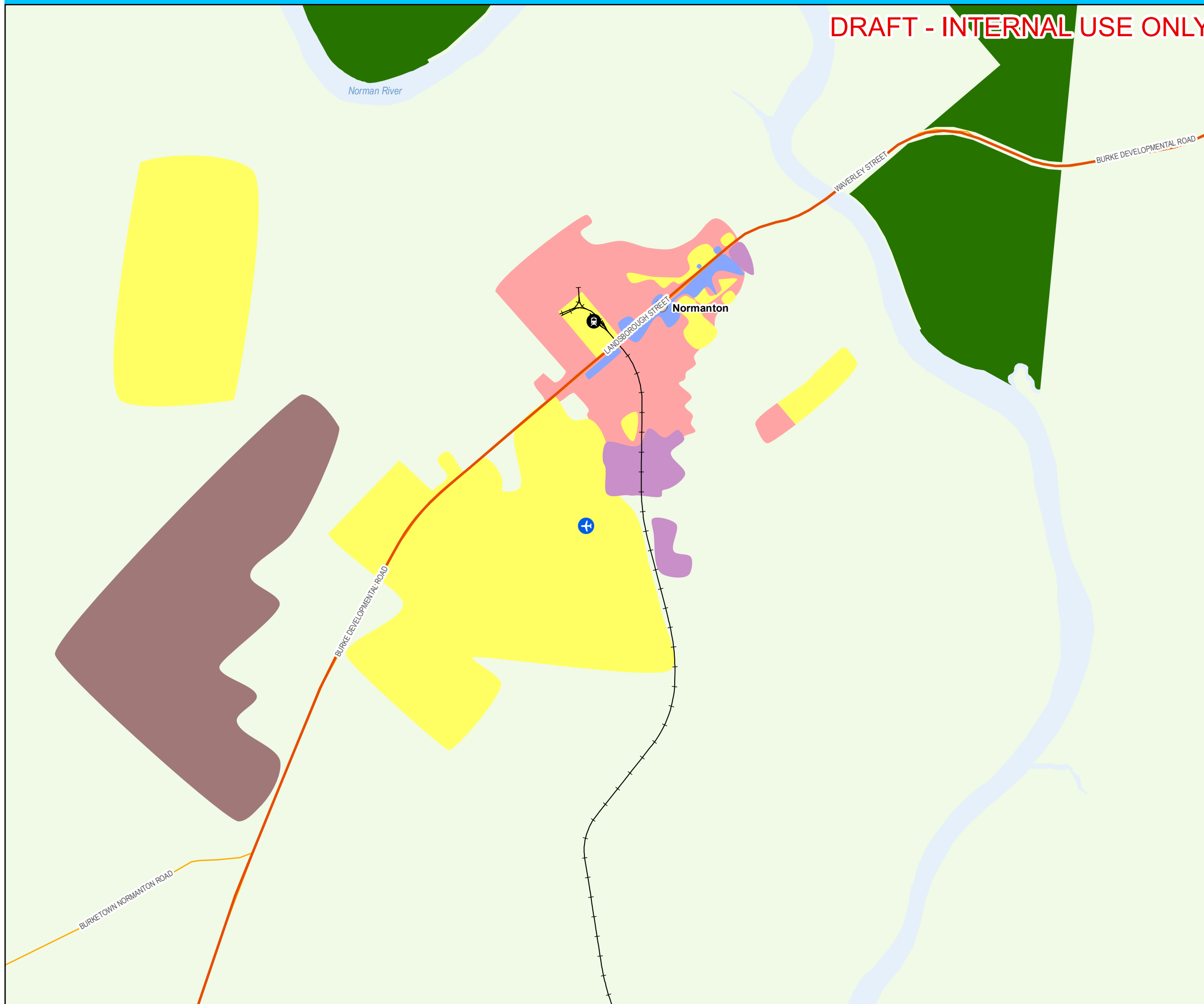
Approx Scale @ A3 1:28,000



**Sheet Index**



**Strategic Framework Map SFM1.1**



DRAFT - INTERNAL USE ONLY

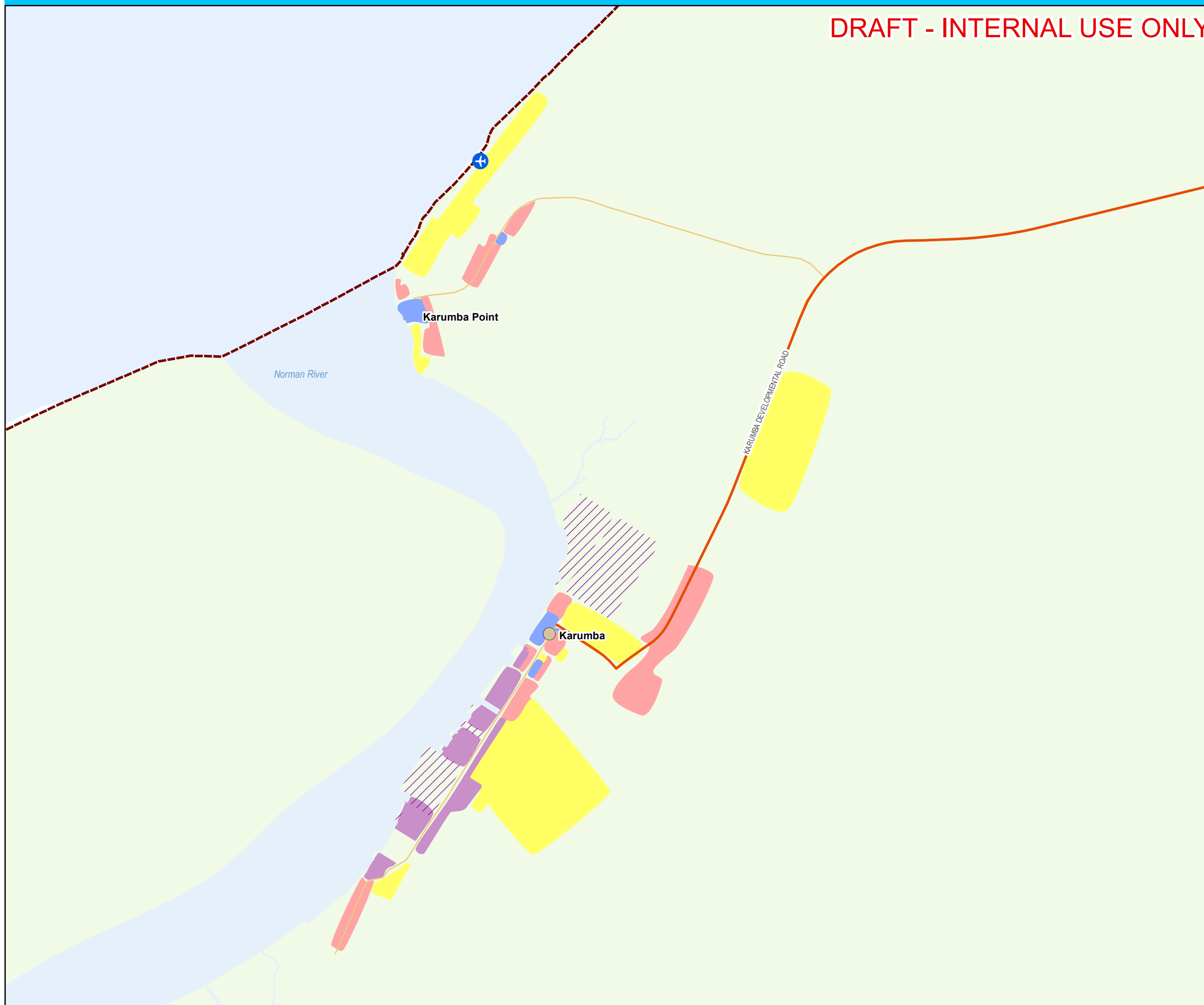


**CARPENTARIA SHIRE**  
*Outback by the Sea®*

**Carpentaria Shire Council  
Planning Scheme**

**Strategic Framework Map  
Karumba and Surrounds**

- Townships
- Airport
- Railway Station
- State controlled road
- Major roads
- Use areas**
- Residential
- Commerical
- Industry
- Community facility
- Rural Residential
- Rural land
- Strategic port land
- MSES Protected areas (estates)
- MSES Protected areas (nature refuge)
- Local Government boundary
- Waterways



**DISCLAIMER**  
While every care is taken to ensure the accuracy of this map, Carpentaria Shire Council makes no representations or warranties about its accuracy, reliability, completeness or suitability for any particular purpose and disclaims all responsibility and liability (including without limitation, liability in negligence) for result of the data being inaccurate or incomplete in any way and for any reason.

Based on or contains data sourced from the State Government 2023 which gives no warranty in relation to the data (including accuracy, reliability, completeness or suitability) and accepts no liability (including without limitation, liability in negligence) for any loss, damage or costs (including consequential damage) relating to any use of the data.

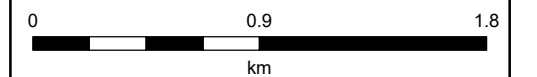
© Copyright Carpentaria Shire Council 2023

**DATA SOURCE**  
- State controlled roads as at 2/02/2021, sourced from QSpatial (State of Queensland)  
- Matters of State Environmental Significance (MSES) as at 21/09/2021, sourced from QSpatial (State of Queensland)  
- Strategic port land provided by Department of Main Roads and Transport, Feb 2022.

Geocentric Datum of Australia (GDA2020 Zone 54)  
Gazettel Data: 00/00/0000

20/01/2023

Approx Scale @ A3 1:30,000



**Sheet Index**



**Strategic Framework Map SFM1.2**