

DRAFT - INTERNAL USE ONLY



# CARPENTARIA SHIRE

*Outback by the Sea®*  
Carpentaria Shire Council  
Planning Scheme

## Environmental Significance Overlay Map Region

- Matters of State Environmental Significance (MSES)**
- Protected areas (estates)
  - Protected areas (nature refuge)
  - Declared fish habitat area
  - Wildlife habitat (endangered or vulnerable)
  - Wildlife habitat (special least concern animal)
  - High ecological significance wetlands
  - Strategic environmental areas (designated precinct)
  - Regulated vegetation (category B)
  - Regulated vegetation (essential habitat)
  - Regulated vegetation (wetland)
  - Regulated vegetation (intersecting a watercourse)
  - Wildlife habitat (sea turtle nesting area)
- Matters of Local Environmental Significance (MLES)**
- Wetland of general ecological significance
  - Cadastral boundary
  - Local Government boundary
  - Surrounding Local Government boundary
  - Waterways
  - Major roads
  - Railway

**DISCLAIMER**  
While every care is taken to ensure the accuracy of this map, Carpentaria Shire Council makes no representations or warranties about its accuracy, reliability, completeness or suitability for any particular purpose and disclaims all responsibility and liability (including without limitation, liability in negligence) for result of the data being inaccurate or incomplete in any way and for any reason.

Based on or contains data sourced from the State Government 2023 which gives no warranty in relation to the data (including accuracy, reliability, completeness or suitability) and accepts no liability (including without limitation, liability in negligence) for any loss, damage or costs (including consequential damage) relating to any use of the data.

© Copyright Carpentaria Shire Council 2023

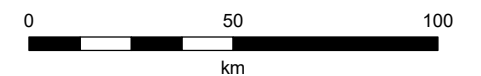
The map may contain overlay in data layers. Refer to Queensland State Government mapping for further information and latest data.

**DATA SOURCE**  
- Cadastre as at 15/02/2022, sourced from QSpatial (State of Queensland).  
- Matters of State Environmental Significance (MSES) published 07/09/2022, sourced from QSpatial (State of Queensland).  
- Matters of Local Environmental Significance (MLES) based on 'Map of Queensland's Wetland Environmental Values' published 06/07/2022, sourced from QSpatial (State of Queensland).

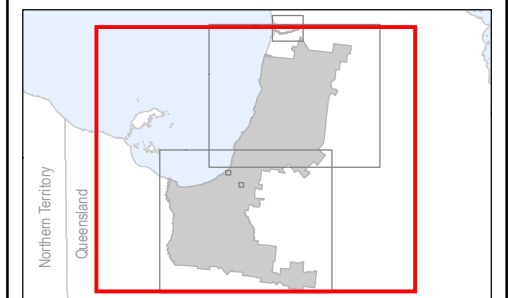
Geocentric Datum of Australia (GDA2020 Zone 54)  
Gazette Data: 00/00/0000

20/01/2023

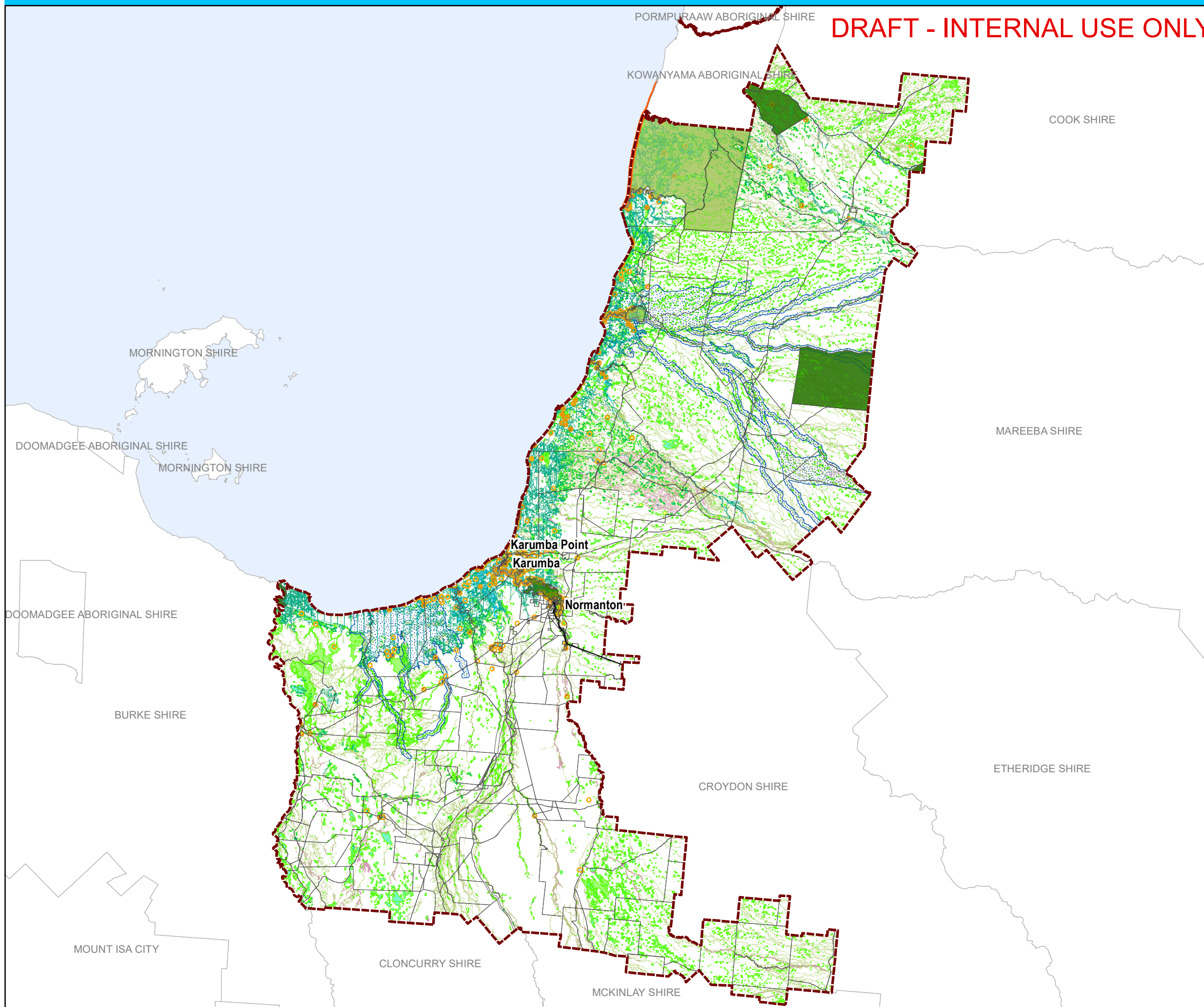
Approx Scale @ A3 1:1,850,000



### Sheet Index



Environmental Significance OM6.0





DRAFT - INTERNAL USE ONLY



**CARPENTARIA SHIRE**  
*Outback by the Sea®*  
**Carpentaria Shire Council**  
**Planning Scheme**

**Environmental Significance Overlay Map**  
*Region (North)*

- Matters of State Environmental Significance (MSES)**
- Protected areas (estates)
  - Protected areas (nature refuge)
  - Declared fish habitat area
  - Wildlife habitat (endangered or vulnerable)
  - Wildlife habitat (special least concern animal)
  - High ecological significance wetlands
  - Strategic environmental areas (designated precinct)
  - Regulated vegetation (category B)
  - Regulated vegetation (essential habitat)
  - Regulated vegetation (wetland)
  - Regulated vegetation (intersecting a watercourse)
  - Wildlife habitat (sea turtle nesting area)
- Matters of Local Environmental Significance (MLES)**
- Wetland of general ecological significance
  - Cadastral boundary
  - Local Government boundary
  - Surrounding Local Government boundary
  - Waterways

**DISCLAIMER**  
While every care is taken to ensure the accuracy of this map, Carpentaria Shire Council makes no representations or warranties about its accuracy, reliability, completeness or suitability for any particular purpose and disclaims all responsibility and liability (including without limitation, liability in negligence) for result of the data being inaccurate or incomplete in any way and for any reason.

Based on or contains data sourced from the State Government 2023 which gives no warranty in relation to the data (including accuracy, reliability, completeness or suitability) and accepts no liability (including without limitation, liability in negligence) for any loss, damage or costs (including consequential damage) relating to any use of the data.

© Copyright Carpentaria Shire Council 2023

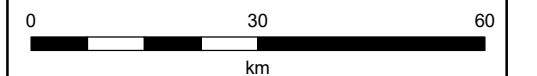
The map may contain overlay in data layers. Refer to Queensland State Government mapping for further information and latest data.

**DATA SOURCE**  
- Cadastre as at 15/02/2022, sourced from QSpatial (State of Queensland).  
- Matters of State Environmental Significance (MSES) published 07/09/2022, sourced from QSpatial (State of Queensland).  
- Matters of Local Environmental Significance (MLES) based on 'Map of Queensland's Wetland Environmental Values' published 06/07/2022, sourced from QSpatial (State of Queensland).

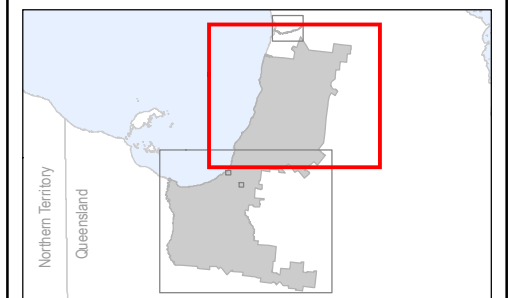
Geocentric Datum of Australia (GDA2020 Zone 54)  
Gazette Data: 00/00/0000

20/01/2023

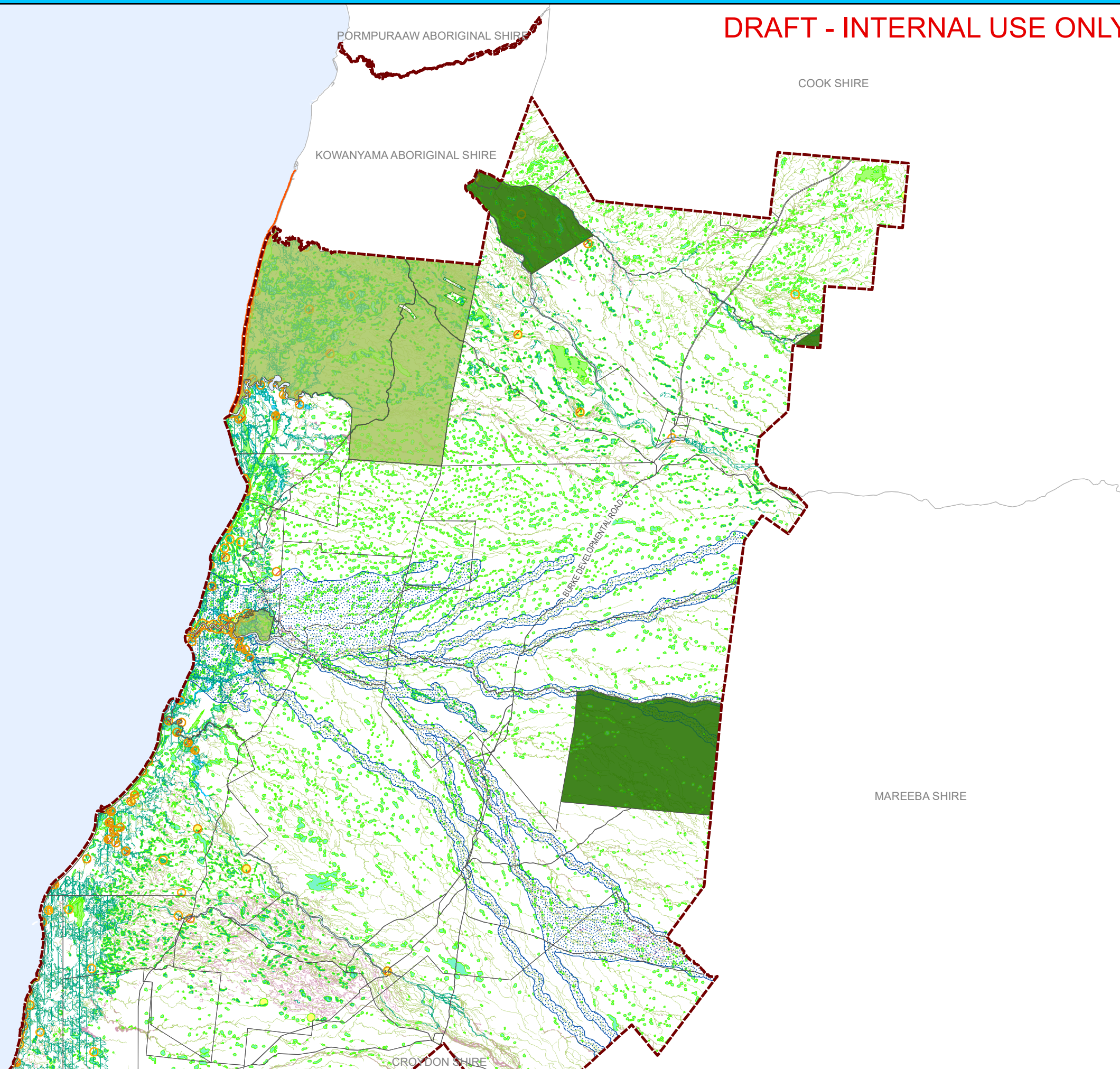
Approx Scale @ A3 1:1,000,000



**Sheet Index**



**Environmental Significance OM6.1**





DRAFT - INTERNAL USE ONLY



# CARPENTARIA SHIRE

*Outback by the Sea®*  
Carpentaria Shire Council  
Planning Scheme

## Environmental Significance Overlay Map Region (South)

### Matters of State Environmental Significance (MSES)

- Protected areas (estates)
- Declared fish habitat area
- Wildlife habitat (endangered or vulnerable)
- Wildlife habitat (special least concern animal)
- High ecological significance wetlands
- Strategic environmental areas (designated precinct)
- Regulated vegetation (category B)
- Regulated vegetation (essential habitat)
- Regulated vegetation (wetland)
- Regulated vegetation (intersecting a watercourse)

### Matters of Local Environmental Significance (MLES)

- Wetland of general ecological significance
- Cadastral boundary
- Local Government boundary
- Surrounding Local Government boundary
- Waterways
- Railway

**DISCLAIMER**  
While every care is taken to ensure the accuracy of this map, Carpentaria Shire Council makes no representations or warranties about its accuracy, reliability, completeness or suitability for any particular purpose and disclaims all responsibility and liability (including without limitation, liability in negligence) for result of the data being inaccurate or incomplete in any way and for any reason.

Based on or contains data sourced from the State Government 2023 which gives no warranty in relation to the data (including accuracy, reliability, completeness or suitability) and accepts no liability (including without limitation, liability in negligence) for any loss, damage or costs (including consequential damage) relating to any use of the data.

© Copyright Carpentaria Shire Council 2023

The map may contain overlay in data layers. Refer to Queensland State Government mapping for further information and latest data.

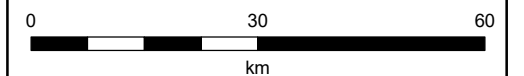
#### DATA SOURCE

- Cadastre as at 15/02/2022, sourced from QSpatial (State of Queensland).
- Matters of State Environmental Significance (MSES) published 07/09/2022, sourced from QSpatial (State of Queensland).
- Matters of Local Environmental Significance (MLES) based on 'Map of Queensland's Wetland Environmental Values' published 06/07/2022, sourced from QSpatial (State of Queensland).

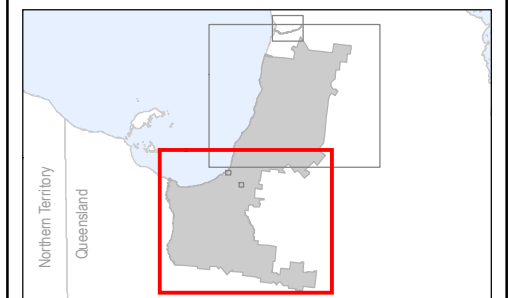
Geocentric Datum of Australia (GDA2020 Zone 54)  
Gazetted Data: 00/00/0000

20/01/2023

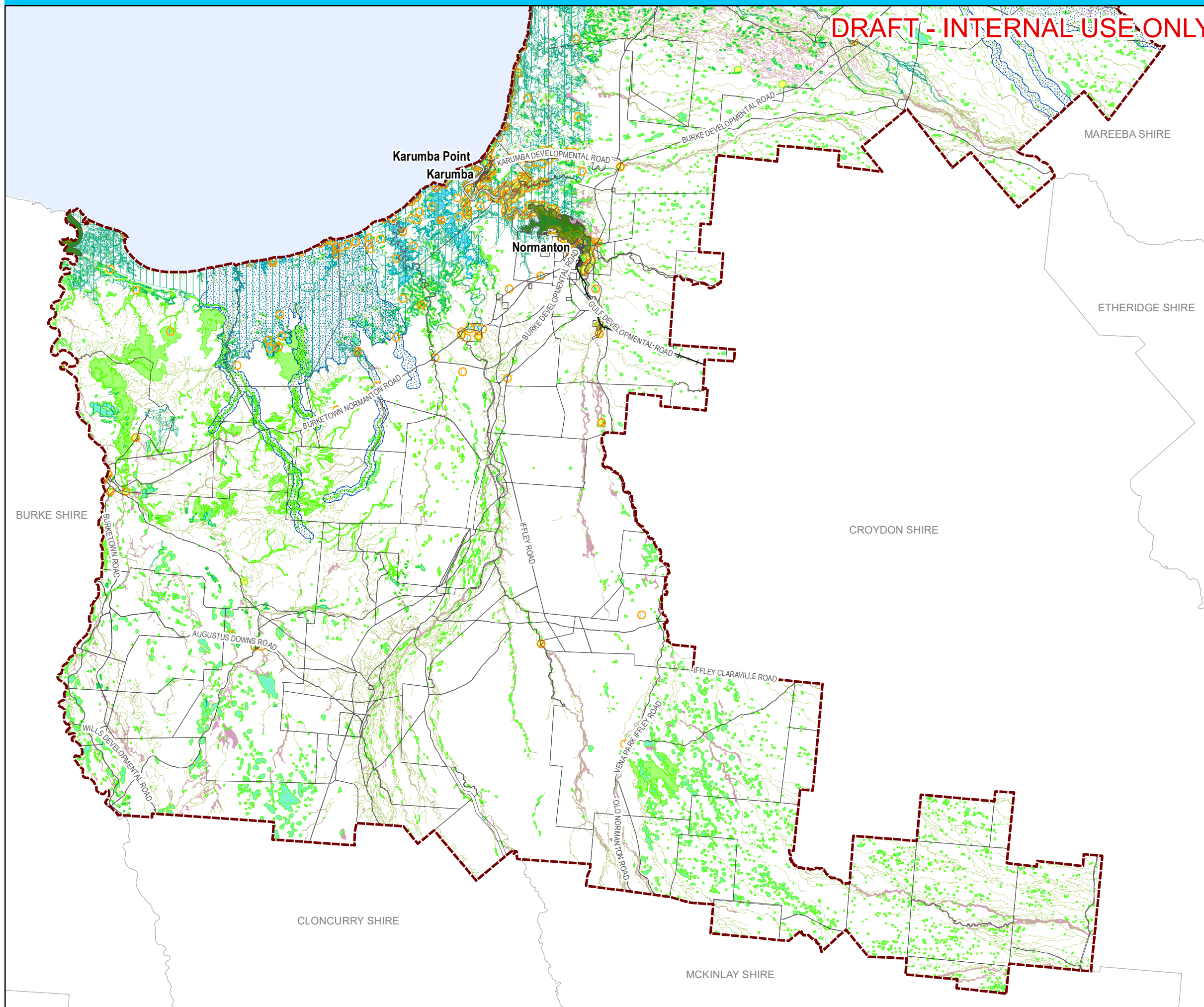
Approx Scale @ A3 1:1,000,000



#### Sheet Index

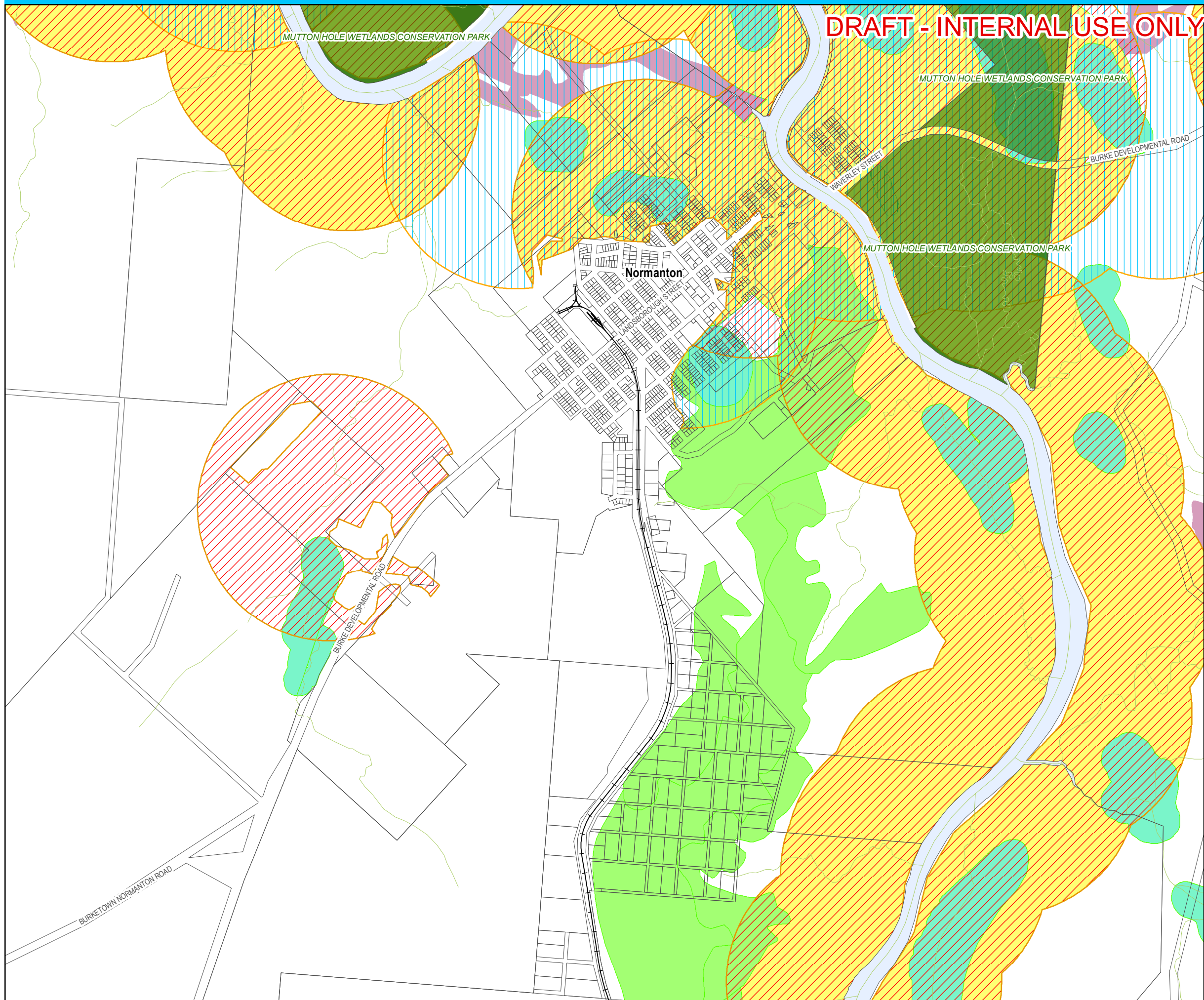


Environmental Significance OM6.2





DRAFT - INTERNAL USE ONLY



**CARPENTARIA SHIRE**  
*Outback by the Sea®*  
**Carpentaria Shire Council**  
**Planning Scheme**

**Environmental Significance Overlay Map**  
*Normanton and Surrounds*

**Matters of State Environmental Significance (MSES)**

- Protected areas (estates)
- Wildlife habitat (endangered or vulnerable)
- Wildlife habitat (special least concern animal)
- High ecological significance wetlands
- Regulated vegetation (category B)
- Regulated vegetation (essential habitat)
- Regulated vegetation (wetland)
- Regulated vegetation (intersecting a watercourse)

**Matters of Local Environmental Significance (MLES)**

- Wetland of general ecological significance
- Cadastral boundary
- Local Government boundary
- Waterways
- Railway

**DISCLAIMER**  
While every care is taken to ensure the accuracy of this map, Carpentaria Shire Council makes no representations or warranties about its accuracy, reliability, completeness or suitability for any particular purpose and disclaims all responsibility and liability (including without limitation, liability in negligence) for result of the data being inaccurate or incomplete in any way and for any reason.

Based on or contains data sourced from the State Government 2023 which gives no warranty in relation to the data (including accuracy, reliability, completeness or suitability) and accepts no liability (including without limitation, liability in negligence) for any loss, damage or costs (including consequential damage) relating to any use of the data.

© Copyright Carpentaria Shire Council 2023

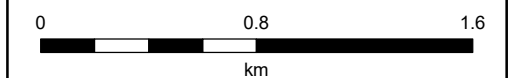
The map may contain overlay in data layers. Refer to Queensland State Government mapping for further information and latest data.

**DATA SOURCE**  
- Cadastre as at 15/02/2022, sourced from QSpatial (State of Queensland).  
- Matters of State Environmental Significance (MSES) published 07/09/2022, sourced from QSpatial (State of Queensland).  
- Matters of Local Environmental Significance (MLES) based on 'Map of Queensland's Wetland Environmental Values' published 06/07/2022, sourced from QSpatial (State of Queensland).

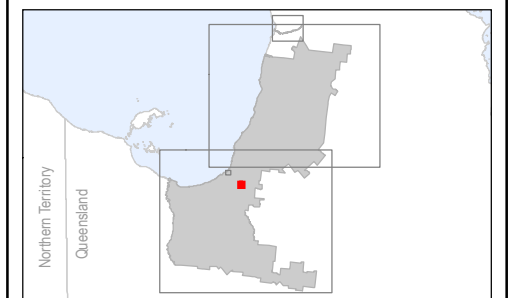
Geocentric Datum of Australia (GDA2020 Zone 54)  
Gazette Data: 00/00/0000

20/01/2023

Approx Scale @ A3 1:28,000



**Sheet Index**



**Environmental Significance OM6.3**



DRAFT - INTERNAL USE ONLY



**CARPENTARIA SHIRE**  
*Outback by the Sea®*  
**Carpentaria Shire Council**  
**Planning Scheme**

**Environmental Significance Overlay Map**  
*Karumba and Surrounds*

**Matters of State Environmental Significance (MSES)**

- Wildlife habitat (endangered or vulnerable)
- Wildlife habitat (special least concern animal)
- High ecological significance wetlands
- Regulated vegetation (category B)
- Regulated vegetation (essential habitat)
- Regulated vegetation (wetland)
- Regulated vegetation (intersecting a watercourse)

**Matters of Local Environmental Significance (MLES)**

- Wetland of general ecological significance
- Cadastral boundary
- Local Government boundary
- Waterways

**DISCLAIMER**  
While every care is taken to ensure the accuracy of this map, Carpentaria Shire Council makes no representations or warranties about its accuracy, reliability, completeness or suitability for any particular purpose and disclaims all responsibility and liability (including without limitation, liability in negligence) for result of the data being inaccurate or incomplete in any way and for any reason.

Based on or contains data sourced from the State Government 2023 which gives no warranty in relation to the data (including accuracy, reliability, completeness or suitability) and accepts no liability (including without limitation, liability in negligence) for any loss, damage or costs (including consequential damage) relating to any use of the data.

© Copyright Carpentaria Shire Council 2023

The map may contain overlay in data layers. Refer to Queensland State Government mapping for further information and latest data.

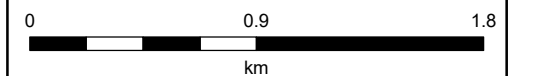
**DATA SOURCE**

- Cadastre as at 15/02/2022, sourced from QSpatial (State of Queensland).
- Matters of State Environmental Significance (MSES) published 07/09/2022, sourced from QSpatial (State of Queensland).
- Matters of Local Environmental Significance (MLES) based on 'Map of Queensland's Wetland Environmental Values' published 06/07/2022, sourced from QSpatial (State of Queensland).

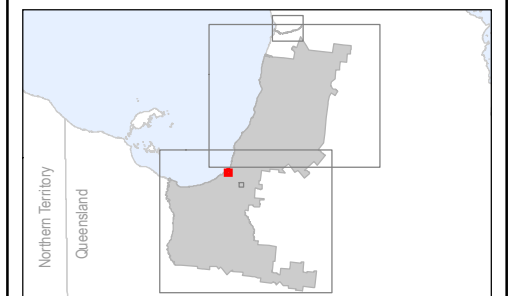
Geocentric Datum of Australia (GDA2020 Zone 54)  
Gazettef Data: 00/00/0000

20/01/2023

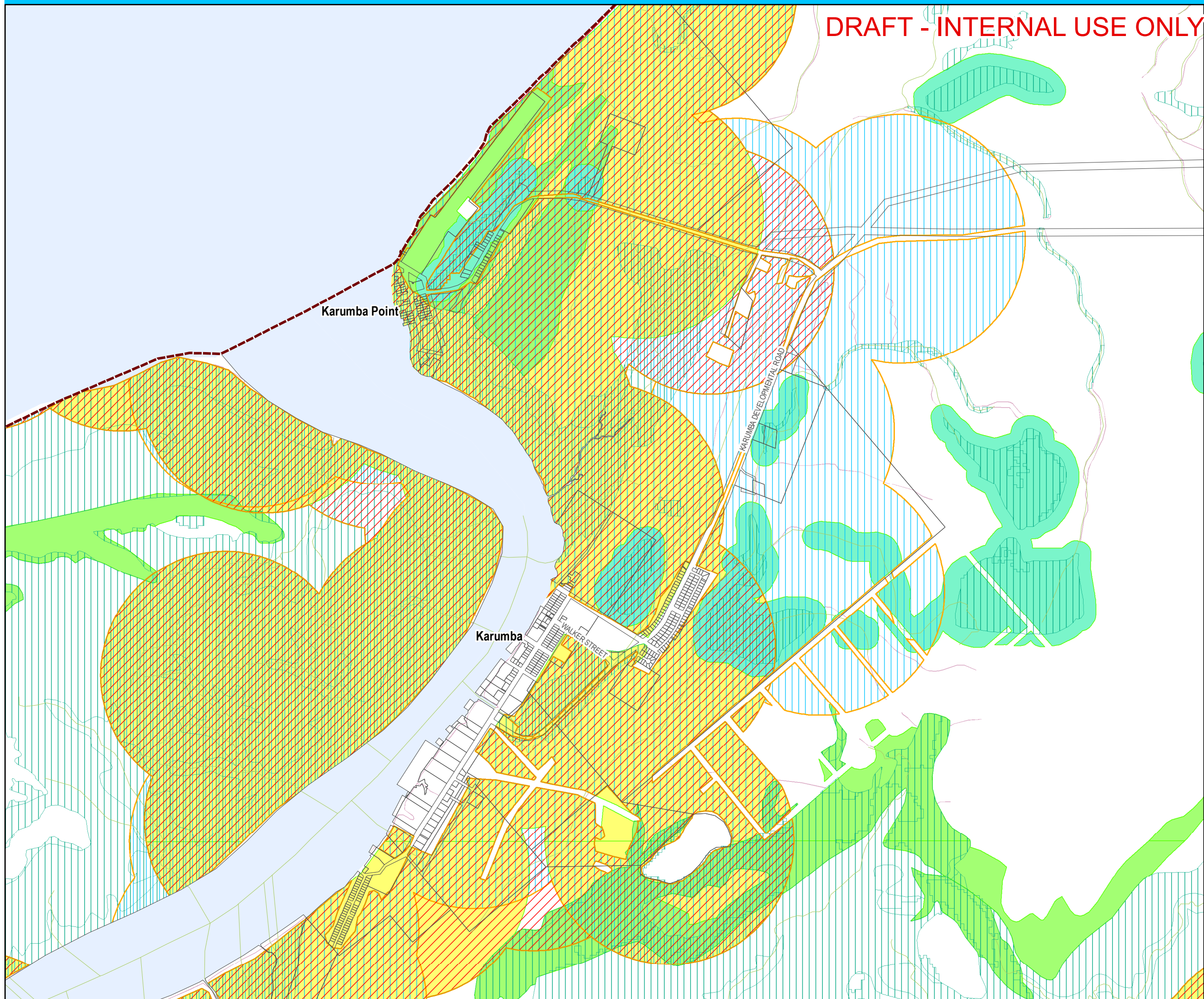
Approx Scale @ A3 1:30,000



**Sheet Index**



**Environmental Significance OM6.4**



DRAFT - INTERNAL USE ONLY



**CARPENTARIA SHIRE**  
*Outback by the Sea®*  
**Carpentaria Shire Council**  
**Planning Scheme**

**Environmental Significance Overlay Map**  
*Coleman River*

**Matters of State Environmental Significance (MSES)**

- Wildlife habitat (endangered or vulnerable)
- Wildlife habitat (special least concern animal)
- High ecological significance wetlands
- Regulated vegetation (category B)
- Regulated vegetation (essential habitat)
- Regulated vegetation (wetland)
- Regulated vegetation (intersecting a watercourse)

**Matters of Local Environmental Significance (MLES)**

- Wetland of general ecological significance
- Cadastral boundary
- Local Government boundary
- Surrounding Local Government boundary
- Waterways

PORMPURA AW ABORIGINAL SHIRE

COOK SHIRE

KOWANYAMA ABORIGINAL SHIRE

**DISCLAIMER**  
While every care is taken to ensure the accuracy of this map, Carpentaria Shire Council makes no representations or warranties about its accuracy, reliability, completeness or suitability for any particular purpose and disclaims all responsibility and liability (including without limitation, liability in negligence) for result of the data being inaccurate or incomplete in any way and for any reason.

Based on or contains data sourced from the State Government 2023 which gives no warranty in relation to the data (including accuracy, reliability, completeness or suitability) and accepts no liability (including without limitation, liability in negligence) for any loss, damage or costs (including consequential damage) relating to any use of the data.

© Copyright Carpentaria Shire Council 2023

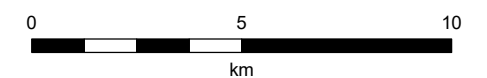
The map may contain overlay in data layers. Refer to Queensland State Government mapping for further information and latest data.

**DATA SOURCE**  
- Cadastre as at 15/02/2022, sourced from QSpatial (State of Queensland).  
- Matters of State Environmental Significance (MSES) published 07/09/2022, sourced from QSpatial (State of Queensland).  
- Matters of Local Environmental Significance (MLES) based on 'Map of Queensland's Wetland Environmental Values' published 06/07/2022, sourced from QSpatial (State of Queensland).

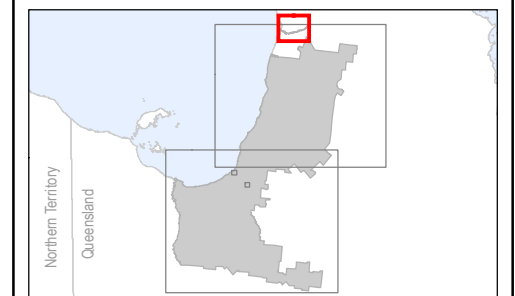
Geocentric Datum of Australia (GDA2020 Zone 54)  
Gazette Data: 00/00/0000

20/01/2023

Approx Scale @ A3 1:180,000



**Sheet Index**



**Environmental Significance OM6.**